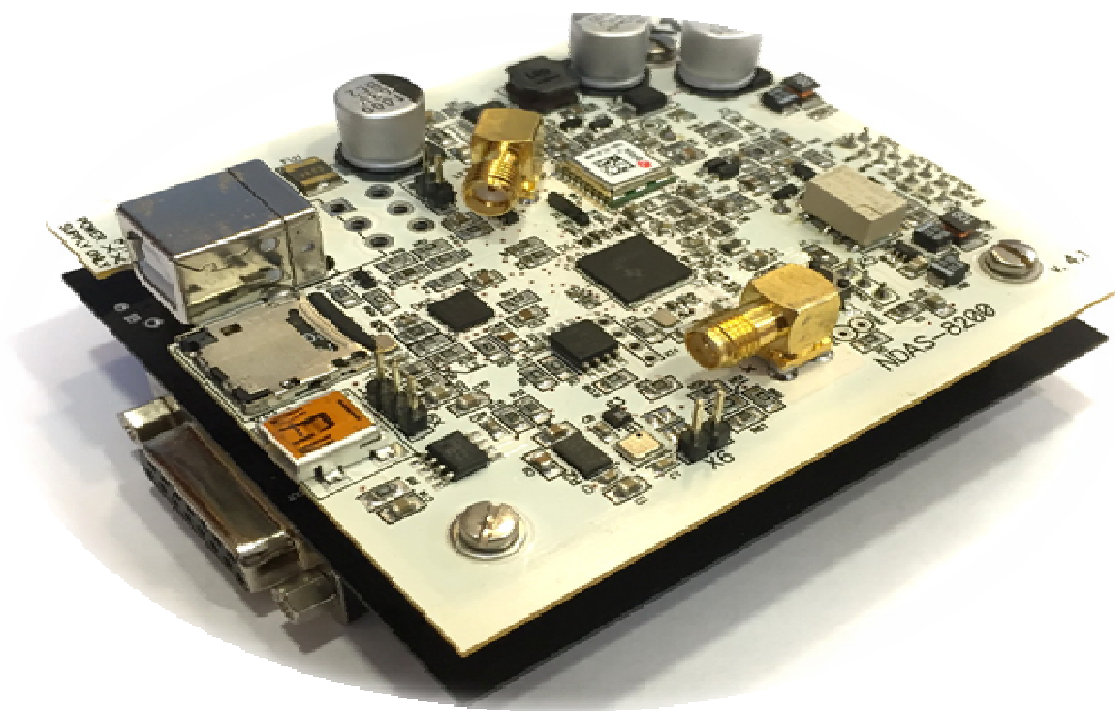


NDAS-8224

4-channel seismic signals recorder



www.nordlab.com
info@nordlab.com

Manufacturer: **LLC “NordLab”**
3, Pervomayskaya street, Dolgoprudny,
Moscow region, 141700, Russia
Phone/fax: +7 (499) 707-76-57

Technical specifications

ADC type	Sigma-delta
Number of channels	4
Type inputs	Differential
Input voltage range	±24 V differential
Input impedance	180 kOhm 1000 pF
Gain coefficient (G)	1, 2, 4, 8, 12 Software selectable
ADC sampling rate	1, 10, 50, 100, 250, 500, 1000 sps
ADC resolution	24 bit
ADC noise performance	20.4 ENOB @ 1000 Hz, 22 ENOB @ 100 Hz, at G = 1
Calibration facility	Pulse / sine signal
GNSS receiver	Inbuilt GPS and GLONASS receiver
GNSS timing accuracy	< 1µS
Data recording modes	Continuous; on/off by schedule
Data recording format	Internal with the possibility for conversion into binary, miniSeed, SEG
Data storage	32 Gb flash storage
Data transfer	High-speed USB 2.0
Temperature range	-40 ... +85 °C
Supply voltage	3.8 – 5.5 V DC 5 V DC from USB port
Power consumption during stand-alone recording	< 300 mW
Hydrophone supply	± 2.5 V, 5 mA
Connectors type	SMA-A for GPS antenna SMA-A for GLONASS antenna USB-B miniUSB DB15
Dimensions	95x80x29 mm
Weight	0.2 kg

pRecorder layout

The NDAS-8224 module has the following (see Fig.1 and Fig.2)

1. USB-B or MF2x3MRA connector for power supply;
2. microSD card slot;
3. miniUSB connector for connecting to PC;
4. LED indicators connector;
5. GPS antenna connector;
6. Wi-Fi antenna connector;
7. Firmware update key;
8. Hardware reset button;
9. Connector DB-15F for external sensor.

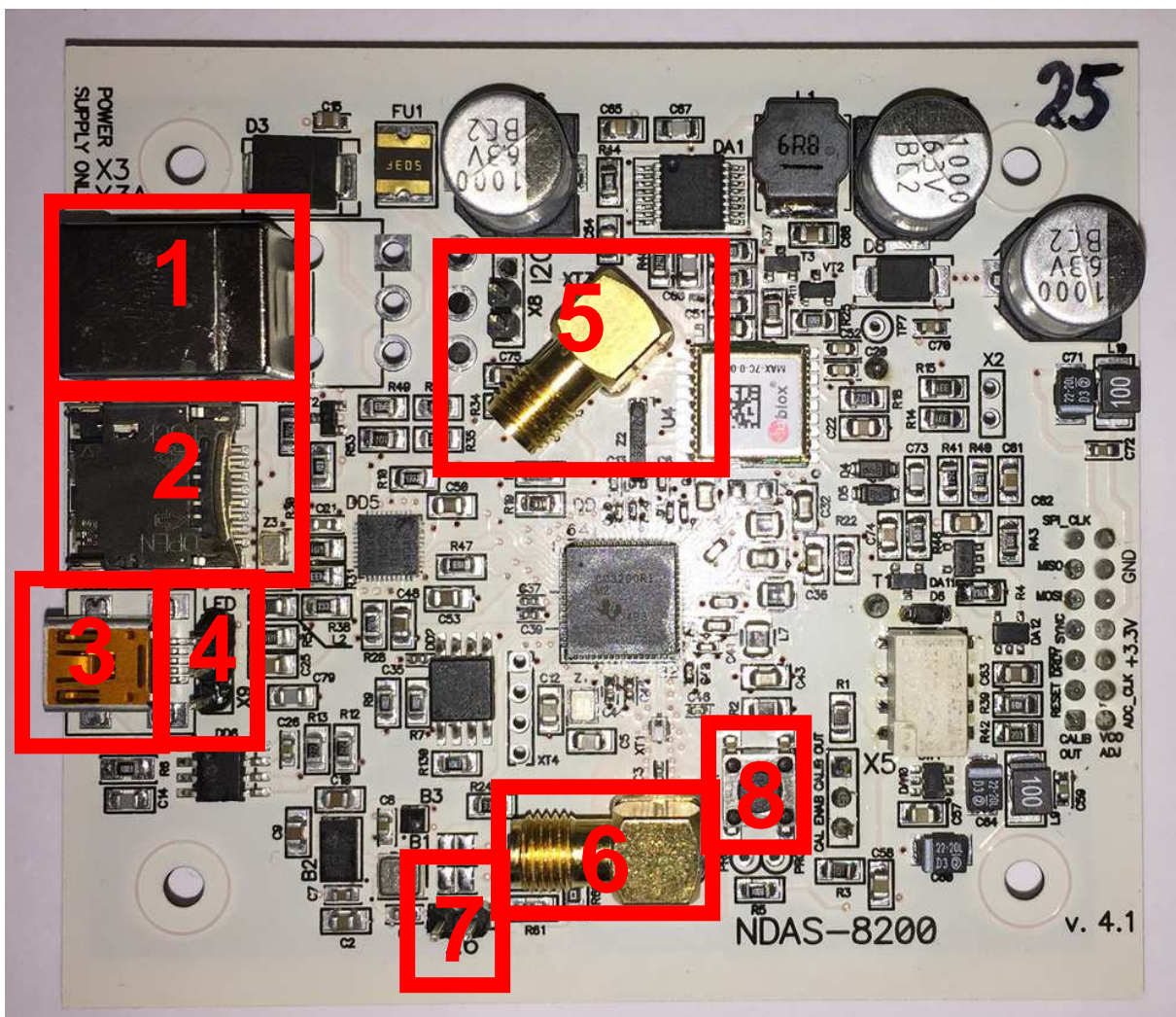


Fig.1 Top view of the module, NDAS 8200 board;



Fig.2. Bottom view, NDAS-8024 board.

Device package delivery set

- Boards NDAS-8024 and NDAS-8200, into a single module,
- 32GB microSD card installed;
- Cable USB-A – miniUSB – 1 pcs.;
- Cable SMA-M – SMA-M – 2 pcs.;
- Adapter SMA A/B – 1 pcs.;
- Connector SMA-B – 2 pcs.;
- Jumper – 1 pcs.